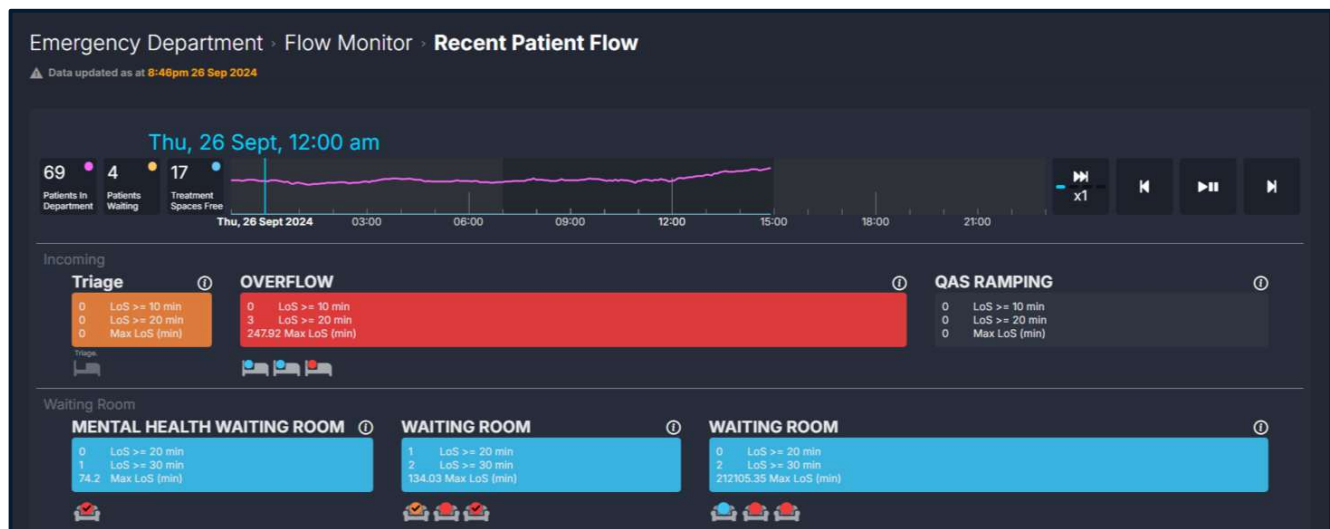


Recent Patient Flow

Recent Patient Flow provides an activity overview of the Emergency Department that can be rewound up to 24 hours into the past. This component enables detailed playback and analysis of recent patient movements in the Emergency Department. Information available from this component includes patient locations, area occupancy, patient movements between areas, as well as visual indicators for capacity issues and length of stay breaches.



Interaction

The following interaction is available in this component.

Interaction	Screenshot	Action
Click or Drag Timeline		Clicking a point on the timeline skips the analysis to the selected time. Clicking and dragging on the timeline scrubs through the playback of recent patient flow. The timeline is shaded to easily distinguish between the morning shift (7AM to 3PM), afternoon shift (3PM to 11PM) and night shift (11PM to 7AM).
Click Playback Controls		Clicking the playback controls (from left to right): <ul style="list-style-type: none"> ▪ Toggles the playback speed between x1, x2, x5 and x10 ▪ Rewinds playback by 10 minutes ▪ Plays or pauses playback ▪ Fast forwards playback by 10 minutes
Hover on Patient		Hovering the cursor over a patient will reveal the patient's ID, Time in ED, Time in Area and Triage Priority.
Click on Patient/Pod		Clicking a patient or pod will reveal the details of the current patient(s) such as patient demographics, Triage, Diagnosis, Time in ED, pending Subspecialty Review requests and pending Admission requests.
Hover on Pod Information		Hovering the cursor over a pod's information icon will reveal the pod's current capacity status as well as the criteria for each status.

Component Elements

Element	Screenshot	Explanation
Summary		Summary of the number of Patients in Department , Patients Waiting and Treatment Spaces Free for the selected timepoint.
Timeline		Displays how the Summary metrics outlined above have trended for the recent 24 hour period.
ED Pathway		The pathway in the Emergency Department which the pod or treatment area is mapped to (e.g., Resuscitation in Treatment Area , Triage in Incoming).
Pod or Treatment Area		A pod or treatment area (e.g., Acute , Waiting Room) in the Emergency Department which contains treatment spaces such as chairs, trolleys and beds.
Patient or Bed		<p>A patient or treatment space (i.e., chair, trolley or bed) within the Emergency Department. The graphic will be greyed out if the space is currently unoccupied.</p> <p>Patients in Waiting Rooms are marked with a tick once they have been seen.</p> <p>Patients in Treatment Areas and Observation Areas are colour coded according to the following length of stay criteria:</p> <ul style="list-style-type: none"> 0-3 hours 3-4 hours > 4 hours > 8 hours – the patient's dot will pulse red