

Interpreting Flow Length of Stay (LoS)

What is Flow Length of Stay (LoS)?

A calculation based on the **open capacity of an individual ward** relative to the **number of admissions expected** for that weekday. This calculation assists in identifying patients who have lengths of stay greater than what is required for the ward to **maintain patient flow**.

$$\text{Flow LoS} = \frac{\text{Ward Capacity}}{\text{Expected Admissions}}$$

What is a Passive Bed?

Inpatients with a ward length of stay that is **at or more than double** that required for the individual ward to maintain patient flow (**Flow LoS**). These patients may require complex care management to facilitate treatment and discharge.

What is a Passive Bed Risk?

Inpatients with a ward length of stay **above but less than double** that required for the individual ward to maintain patient flow (**Flow LoS**). These patients may benefit from a greater focus on managing their treatment and discharge planning.

Use & Applications in SystemView

Flow LoS is used throughout the Beds domain to aid analysis and decision-making.

Inpatient Flow Monitor

Hospital Overview & Division Overview



This chart provides instant visualisation of occupied, reserved and available inpatient beds.

● Patient With LoS < Flow

Ward length of stay below the ward's Flow LoS.

● Passive Bed Risks

Ward length of stay above but less than double the ward's Flow LoS.

● Passive Bed

Ward length of stay at or more than double the ward's Flow LoS.

Complex Patients

Admitted Patient Register, Complex Patient Register & Complex Patient Escalation List

| Facility | Care Type | Ward | Ward Subtype | Ward | Bed | Registration Number | UIN | Patient Name | DOB | Age | Gender | Patient Subtype | Ethnicity | Admission Date | Total LoS (days) | Ward LoS (days) | Flow Category |
|------------|------------|------|--------------|---------|-----|---------------------|--------------------------|--------------|-------------|-----|--------|-----------------|--------------|----------------|------------------|-----------------|---------------|
| Facility 1 | ACUTE CARE | SCC | PHYSICAL | WARD 40 | 40 | 2005708 | PAT-00000000000000000000 | PAULIEA | 01 Jan 1978 | 44 | M | SCC | Not Assigned | 18 Jul 2023 | 9 | 5 | Passive |
| Facility 2 | ACUTE CARE | SCC | PHYSICAL | WARD 41 | 41 | 2005709 | PAT-00000000000000000000 | JANUS | 01 Jan 1943 | 79 | M | SCC | Not Assigned | 21 Jul 2023 | 6 | 5 | Risk |
| Facility 3 | ACUTE CARE | SCC | PHYSICAL | WARD 42 | 42 | 2005710 | PAT-00000000000000000000 | JOHN | 01 Jan 1975 | 47 | M | SCC | Not Assigned | 21 Jul 2023 | 6 | 5 | Risk |
| Facility 4 | ACUTE CARE | SCC | PHYSICAL | WARD 43 | 43 | 2005711 | PAT-00000000000000000000 | ELIOT | 01 Jan 1985 | 38 | M | SCC | Not Assigned | 21 Jul 2023 | 6 | 5 | Risk |
| Facility 5 | ACUTE CARE | SCC | PHYSICAL | WARD 44 | 44 | 2005712 | PAT-00000000000000000000 | JOHN | 01 Jan 1980 | 42 | M | SCC | Not Assigned | 21 Jul 2023 | 6 | 5 | OK |

These tables display comprehensive inpatient information and can be easily filtered.

■ Patients With LoS < Flow LoS | OK

Ward length of stay below the ward's Flow LoS.

■ Passive Risk Bed | Risk

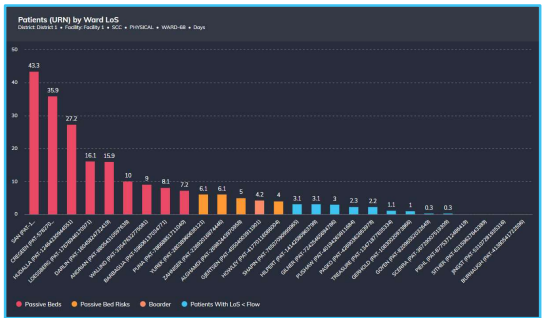
Ward length of stay above but less than double the ward's Flow LoS.

■ Passive Bed | Passive

Ward length of stay at or more than double the ward's Flow LoS.

Ward View

Ward Demand



This chart displays all patients admitted to the current ward and is sorted by length of stay.

Patients With LoS < Flow

Ward length of stay below the ward's Flow LoS.

Passive Bed Risks

Ward length of stay above but less than double the ward's Flow LoS.

Passive Beds

Ward length of stay at or more than double the ward's Flow LoS.

Ward Demand & Ward Overview

3.4 Flow LoS

This metric provides the up-to-date Flow LoS calculation for the current ward. This value along with other length of stay values on the page can be toggled between **Hours** or **Days** using the **LoS** drop-down in the filter bar.

LoS
Days ▼

Ward Demand & Ward Overview

| Current Patients (LoS is in Days) | | | | | | | | | |
|--|---------------------|-----|-----|------------|--------------|-----------|-----------|----------|----------|
| District District 1 • Facility Facility 1 • SCC • PHYSICAL • WARD-08 • Show All • Days • Order By Ward LoS | | | | | | | | | |
| Patient Name | URN | Bed | Age | Consultant | Speciality | EDO | Total LoS | Ward LoS | ROH(20%) |
| PARKO | PAT-4208030261976 | 54 | 68 | SANTALLA | Neurosurgery | 31 Jul 23 | 3.3 | 2.2 | 4.8 |
| PUGHAW | PAT-40284263811084 | 42 | 63 | BERCEGAR | Neurosurgery | 28 Jul 23 | 11.3 | 2.3 | 4.2 |
| ELPHST | PAT-2724040040404 | 71 | 80 | WYNEWON | Neurosurgery | 07 Aug 23 | 3.1 | 9 | 11.2 |
| KLEMETSON | PAT-1414308083298 | 52 | 44 | KLEMETSON | Neurosurgery | 11 Aug 23 | 3.1 | 1.1 | 9.2 |
| SHAPIN | PAT-7960709099965 | 49 | 83 | WYNEWON | Neurosurgery | 31 Jul 23 | 3.5 | 1.1 | 4.1 |
| HOWLEY | PAT-41770130080004 | 48 | 36 | BERCEGAR | Neurosurgery | 31 Jul 23 | 4.9 | 4.9 | 18.9 |
| ELPHST | PAT-414308083298 | 52 | 44 | BERCEGAR | Neurosurgery | 08 Jul 23 | 4.2 | 4.2 | 15.6 |
| ALGHAMDI | PAT-20802443970958 | 29 | 18 | BERCEGAR | Neurosurgery | 04 Aug 23 | 5 | 4 | 15.0 |
| ZAFARER | PAT-228020100474446 | 58 | 47 | WYNEWON | Neurosurgery | 28 Jul 23 | 6.1 | 6.1 | 20.4 |
| ELPHST | PAT-7960709099965 | 49 | 83 | WYNEWON | Neurosurgery | 08 Jul 23 | 6.3 | 6.3 | 20.7 |
| PUNA | PAT-7960851711040 | 43 | 53 | KLEMETSON | Neurosurgery | 04 Aug 23 | 36.4 | 7.2 | 4.9 |
| BARBAGLIA | PAT-59006137034771 | 33 | 70 | PALESANO | Neurosurgery | 04 Aug 23 | 11.9 | 6.1 | 10.2 |
| WALLING | PAT-3554703277081 | 45 | 44 | BERCEGAR | Neurosurgery | 28 Jul 23 | 9.1 | 9.1 | 10.1 |

This table provides demographic, length of stay and risk of hospitalisation information for all patients admitted to the current ward.

Patients With LoS < Flow

Ward length of stay below the ward's Flow LoS.

Passive Bed Risks

Ward length of stay above but less than double the ward's Flow LoS.

Passive Beds

Ward length of stay at or more than double the ward's Flow LoS.