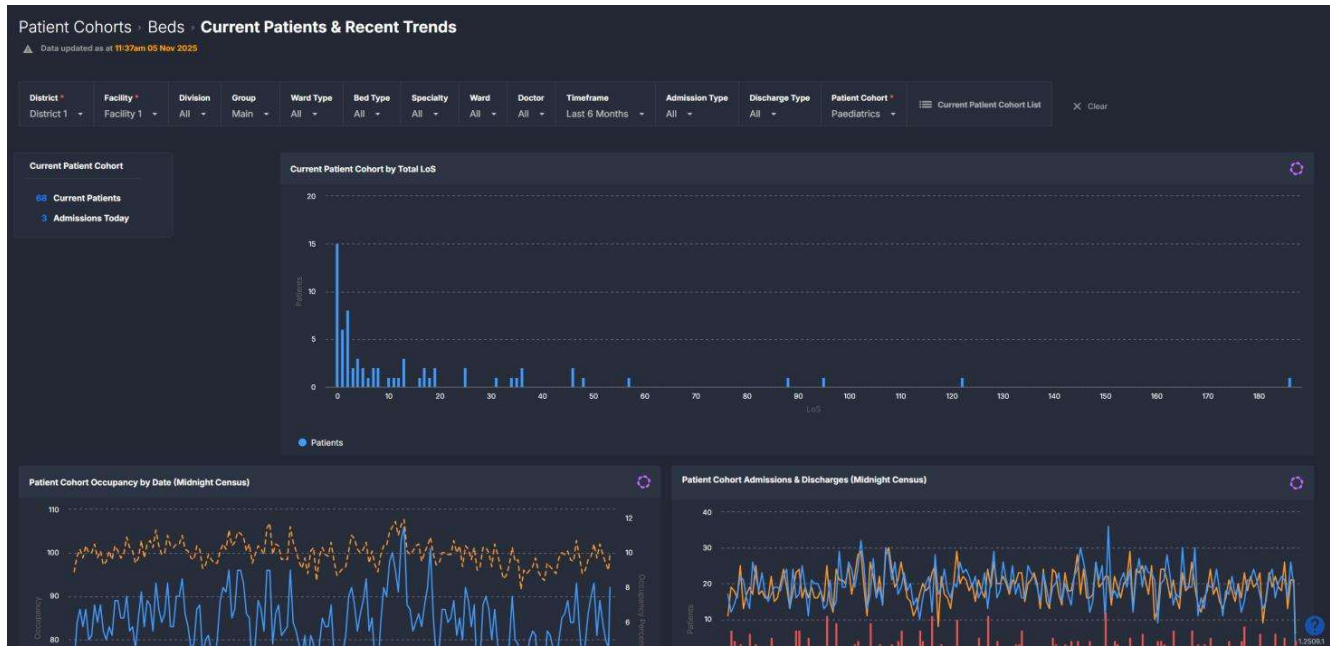


# Beds

## Current Patients & Recent Trends

The **Current Patients & Recent Trends** component provides a real-time and historical view of all current inpatients belonging to the selected patient cohort. It helps teams understand who is currently admitted, how long they have been in hospital, and how occupancy, admissions, and discharges have changed over time. By combining real-time patient lists with systemwide flow insights, teams can better manage capacity, identify risks, and plan for upcoming pressures.



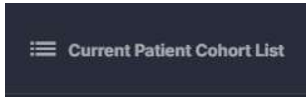
## Filtering

The following noteworthy options are available in this component's **Filter Bar**:

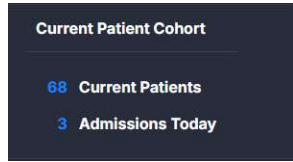


Filter	Description	Filter	Description
<b>Division</b>	Filter by hospital division (e.g., Medicine, Surgery).	<b>Ward</b>	Filter by a specific inpatient ward.
<b>Group</b>	Allows filtering of component by ward group: <b>Main</b> (inpatient overnight wards used for patient flow) or <b>Other</b> (includes non-overnight wards like Medical Day Units).	<b>Doctor</b>	Filter by a specific treating consultant.
<b>Ward Type</b>	Allows filtering of the component by ward type: <b>Physical</b> (onsite) or <b>Virtual</b> (offsite, e.g., Hospital in the Home).	<b>Timeframe</b>	Adjust the retrospective period for the historical trends (default: Last 6 Months, or filter to Last 3, 12, or 18 months).
<b>Bed Type</b>	Filter by bed classification (e.g., standard, special purpose, or mental health beds).	<b>Admission Type</b>	Filters the component data by admission type: <b>Hospital</b> (admitted via the Emergency Department or scheduled pathways) or <b>Ward</b> (transferred from another ward).
<b>Specialty</b>	Filters the component data by treating specialty.	<b>Discharge Type</b>	Filters the component data by discharge type: <b>Home</b> (discharged to home) or <b>Ward</b> (transferred to another ward).

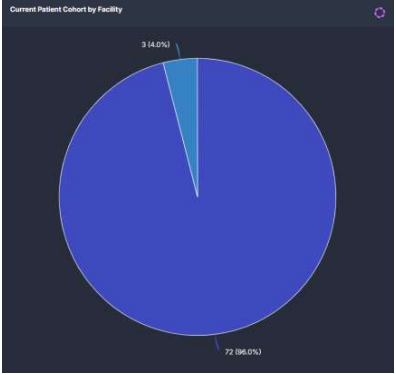
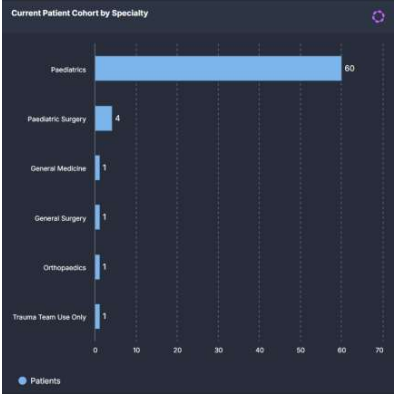
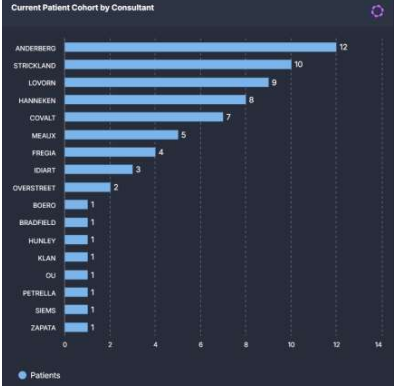
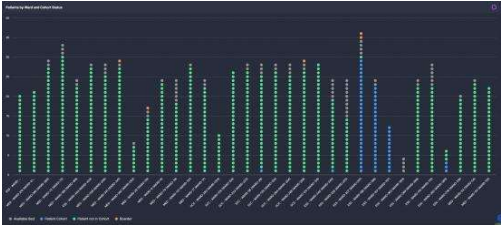
## Buttons

The following buttons are available in this component.

Button	Screenshot	Action
Current Patient Details		<p>Selecting <b>Current Patient Cohort List</b> displays a detailed table of all current inpatients matching the selected filters.</p> <p>Clicking the button displays:</p> <ul style="list-style-type: none"> <li>▪ <b>Current Patient Cohort List:</b> a comprehensive list of all currently admitted patients.</li> <li>▪ <b>Patient-level details</b>, including: <ul style="list-style-type: none"> <li>▪ Patient identifiers</li> <li>▪ Admission date and time</li> <li>▪ Current ward and bed</li> <li>▪ Treating consultant</li> <li>▪ Primary diagnosis</li> </ul> </li> <li>▪ <b>Longest LoS shown first</b>, enabling quick identification of long-staying or complex patients.</li> </ul> <p>This table provides a real-time snapshot of inpatient activity for operational decision-making.</p>

## Component Tiles

Tile	Screenshot	Explanation
Current Patient Cohort		<p>Displays a quick summary of:</p> <ul style="list-style-type: none"> <li>▪ Total Current Patients</li> <li>▪ Admissions Today</li> </ul> <p>in the selected patient cohort.</p> <p>This tile gives a high-level situational overview of current inpatient activity.</p>
Current Patient Cohort by Total LoS		<p>Displays the distribution of current inpatients in the selected patient cohort based on their <b>Length of Stay (LoS)</b> in days, helping teams quickly spot long-stay patients, patterns in bed usage, and potential discharge delays.</p>
Patient Cohort Occupancy by Date (Midnight Census)		<p>Shows historical trends in overall inpatient occupancy, including:</p> <ul style="list-style-type: none"> <li>▪ Number of occupied beds</li> <li>▪ Occupancy percentage (occupied beds ÷ total available beds)</li> </ul> <p>This helps teams understand peak periods, seasonal variation, and underlying capacity pressures across the selected timeframe.</p>
Patient Cohort Admissions & Discharges (Midnight Census)		<p>Displays the historical day-by-day trend of admissions and discharges for the selected patient cohort, along with the net balance of admissions versus discharges.</p> <ul style="list-style-type: none"> <li>▪ Admissions</li> <li>▪ Discharges</li> <li>▪ Negative balance (more discharges than admissions)</li> <li>▪ Positive balance (more admissions than discharges)</li> </ul>

Tile	Screenshot	Explanation
		<p>This helps to understand whether inpatient numbers are growing or reducing and identify periods where admissions exceed discharge capacity.</p>
<p>Current Patient Cohort by Facility</p>		<p>A breakdown of all current inpatients in the selected patient cohort by facility / hospital within the district / health region.</p> <p>This is useful for multi-hospital sites needing visibility across multiple campuses.</p>
<p>Current Patient Cohort by Specialty</p>		<p>Displays the number of current inpatients grouped by treating specialty.</p> <p>This helps identify which clinical areas are contributing the most to the patient cohort's current inpatient demand.</p>
<p>Current Patient Cohort by Consultant</p>		<p>Shows the distribution of current inpatients in the selected patient cohort by treating consultant, highlighting variations in caseloads and supporting workload planning for clinical teams.</p>
<p>Patients by Ward and Cohort Status</p>		<p>This tile provides a ward-by-ward view of occupancy showing inpatients who are:</p> <ul style="list-style-type: none"> <li>■ Not in the selected Patient Cohort</li> <li>■ In the selected Patient Cohort</li> <li>■ Boarder patient</li> <li>■ Available Beds</li> </ul> <p>This helps teams assess where the cohort is concentrated and visualise any ward pressures or bed availability relative to demand.</p>