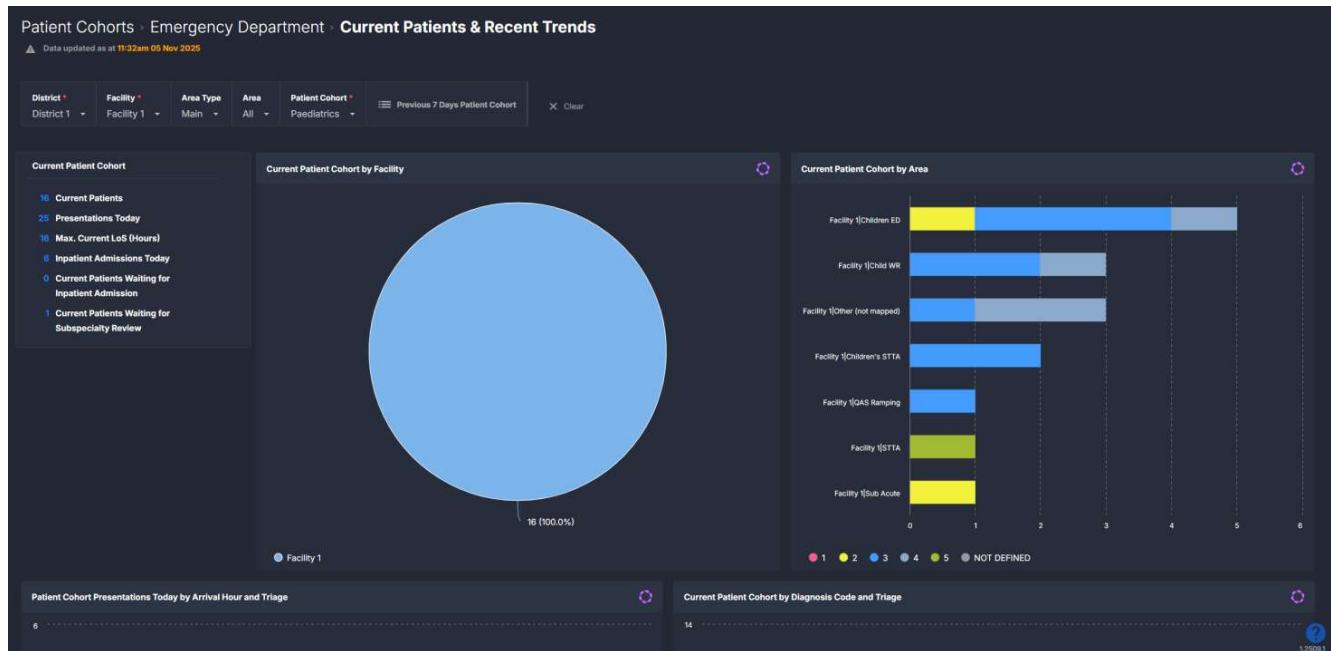


# Emergency Department

## Current Patients & Recent Trends

The **Current Patients & Recent Trends** component provides a real-time view of all current ED patients within a selected patient cohort, along with recent 7-day presentation and activity trends. It brings together operational indicators, flow metrics, and patient-level detail to help teams understand current demand, case mix, and triage patterns, while also reviewing short-term historical activity to support decision-making.



## Filtering

The following noteworthy options are available in this component's **Filter Bar**:


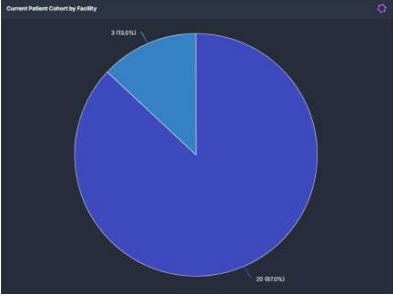
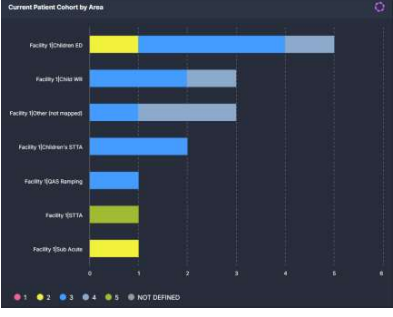
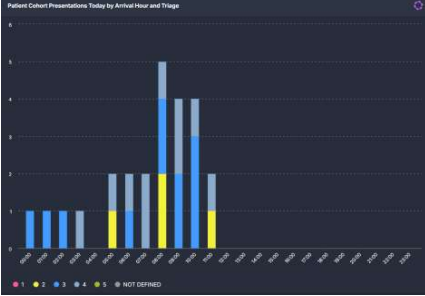
| Filter           | Description   | Filter      | Description  |
|------------------|---|-------------|--|
| <b>Area Type</b> | Select between All, Main or Other mapped areas in the ED. | <b>Area</b> | Select Area(s) within the ED such as Triage, Acute and Minors. |

## Buttons

The following buttons are available in this component.

| Button                                | Screenshot | Action   |
|---------------------------------------|------------|--|
| <b>Previous 7 Days Patient Cohort</b> |            | Clicking this button displays:<br><br><b>Previous 7 Days Patient Cohort Details</b><br>A detailed table listing all patients from the selected cohort who presented to ED in the last seven days, including key clinical and arrival information. It helps users review recent activity, identify trends, and understand patient characteristics without needing to drill into individual records. |

## Component Tiles

| Tile   | Screenshot  | Explanation   |
|--|---|---|
| <p>Current Patient Cohort</p>  |    | <p>Summarises key operational metrics for the selected cohort, including:</p> <ul style="list-style-type: none"> <li>▪ <b>Current Patients:</b> the number of patients from the cohort currently in the ED.</li> <li>▪ <b>Presentations Today:</b> total arrivals today for this cohort.</li> <li>▪ <b>Max Current LoS (Hours):</b> the longest current length of stay among active patients.</li> <li>▪ <b>Inpatient Admissions Today:</b> the count of patients already admitted to inpatient wards today.</li> <li>▪ <b>Current Patients Waiting for Inpatient Admission:</b> patients awaiting bed allocation.</li> <li>▪ <b>Current Patients Waiting for Subspecialty Review:</b> patients waiting for specialist assessment.</li> </ul> <p>These indicators provide an immediate situational snapshot of activity, bottlenecks, and acuity.</p> |
| <p>Current Patient Cohort by Facility</p>                            |   | <p>Displays the distribution of all current cohort patients across facilities. This helps users see where demand is concentrated and whether pressure is unevenly distributed across the network.</p>   |
| <p>Current Patient Cohort by Area</p>                                |  | <p>Shows patient volume across ED areas such as ED waiting room, Short Stay, Resus, or other mapped areas. This chart highlights where specific pressures are occurring, the mix of triage categories, and potential constraints within particular zones.</p>   |
| <p>Patient Cohort Presentations Today by Arrival Hour and Triage</p> |  | <p>Displays today's presentation pattern hour-by-hour, grouped by triage category. This helps identify peak arrival periods and the urgency of presenting patients, assisting with staffing decisions and real-time workflow oversight.</p>   |

| Title  | Screenshot  | Explanation  |
|--|---|--|
| <p>Current Patient Cohort by Diagnosis Code and Triage</p> |    | <p>Summarises current patients by diagnosis (e.g., abdominal pain, respiratory complaints, injury codes) broken down by triage category. This allows users to understand the predominant clinical themes driving today's activity and any emerging patterns.</p>   |
| <p>Current Patient Cohort Details</p>                      |    | <p>Provides a full patient-level view of all current ED patients within the selected cohort.</p> <p>The table includes key information such as arrival details, presenting complaint, diagnosis, triage category, location, treating clinician, cohort tags, and current length of stay.</p> <p>It also includes the number of previous ED visits in the last 365 days, which is particularly useful when analysing Frequent Presenter cohorts.</p> <p>It gives teams a comprehensive snapshot of who is currently in the department to support clinical review, escalation decisions, and operational planning.</p> |
| <p>Previous 7 Days Patient Cohort by Arrival Date</p>      |   | <p>Shows daily presentation volumes over the past week for the selected cohort. Useful for identifying upward or downward trends, variability, and atypical spikes.</p>  |
| <p>Previous 7 Days Patient Cohort by Facility</p>          |  | <p>Shows facility-level distribution across the past week. This supports network-wide planning and highlights persistent imbalances in demand.</p>   |
| <p>Previous 7 Days Patient Cohort by Admission Status</p>  |  | <p>Breaks down presentations into <b>Admitted</b> vs <b>Non-Admitted</b>.</p> <p>This reflects the clinical complexity and demand this cohort historically places on inpatient beds.</p>   |

| Title   | Screenshot   | Explanation  |
|---|--|--|
| <p>Previous 7 Days Patient Cohort by Departure Code</p>                   |   | <p>Displays the distribution of how patients departed from the ED over the past 7 days (e.g., ward admissions, discharged home, or transferred).</p> <p>This helps teams understand flow outcomes and downstream impacts on inpatient units.</p> |
| <p>Top 25 Previous 7 Days Patient Cohort by Suburb and Triage</p>         |   | <p>Shows where recent patients have arrived from, broken down by triage category.</p> <p>Useful for identifying community patterns, service coverage issues, and demographic hot-spots.</p>  |
| <p>Top 25 Previous 7 Days Patient Cohort by Diagnosis Code and Triage</p> |  | <p>Displays the most common diagnoses for the cohort over the past week.</p> <p>This helps clinicians understand recurring issues, seasonal illnesses, and case-mix complexity.</p>  |