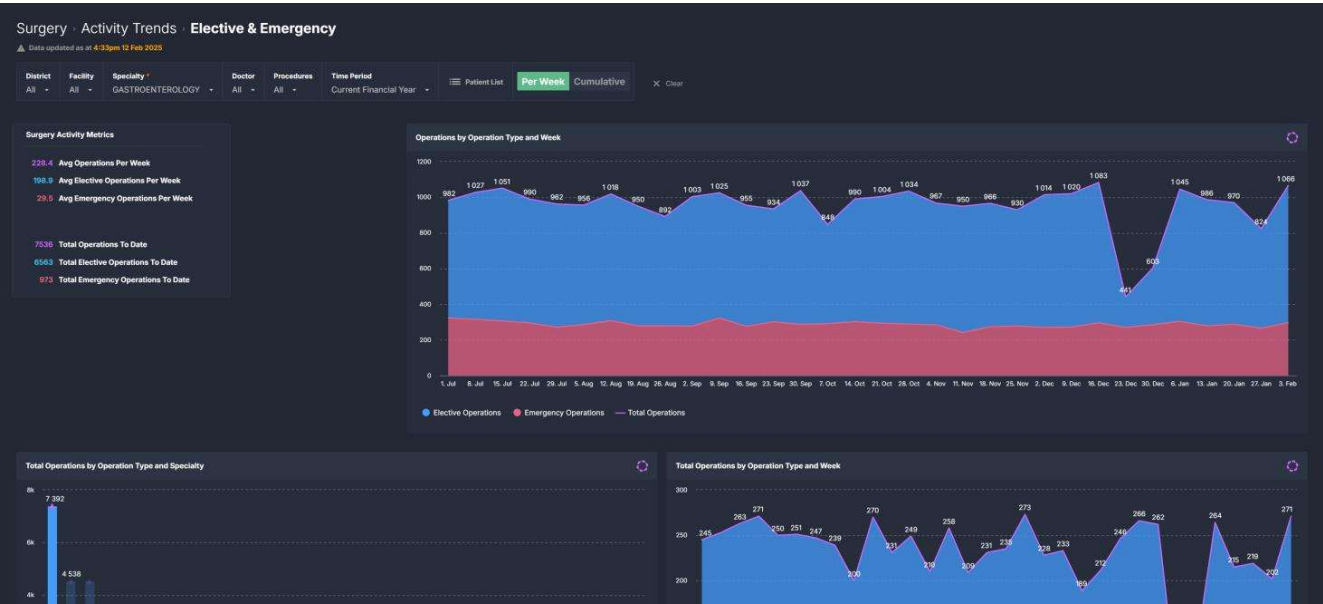


# Activity Trends

## Elective & Emergency

**Elective & Emergency** shows weekly and aggregated trends of surgical activity for elective and emergency cases. Users can switch between weekly and overall views, set yearly activity targets, and monitor progress at specialty and doctor levels. It helps track the number of surgeries performed by specialty, doctor, and procedure type, providing a clear understanding of surgical workloads and trends over time.



## Filtering

The following noteworthy options are available in this component's **Filter Bar**:



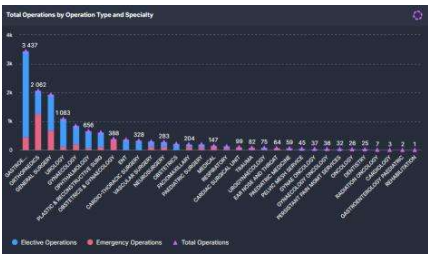
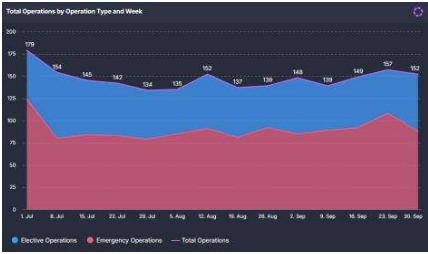
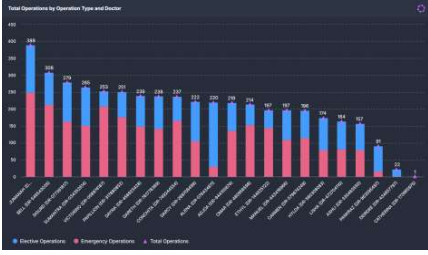
Filter	Description	Filter	Description
Procedures	Allows analysis by specific procedure code.	Time Period	Provides the ability to view activity for the last 12 months, from the current financial year, or from the start of the current year.

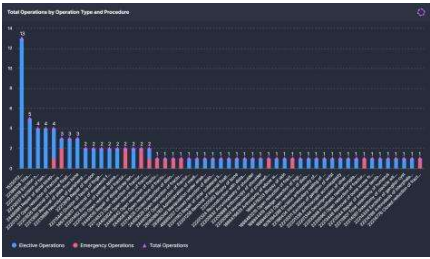
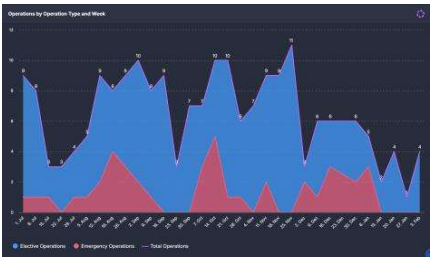
## Buttons

The following buttons are available in this component.

Button	Screenshot	Action
Patient List		Clicking button displays: Patient Details List List of patients who had an operation based on the selected filters with key details such as Operation Date, Start & Finish Time, etc. 
Per Week / Cumulative		Provides the ability to toggle between two views in the trend charts of this component: Per week displays the trend of operations on a weekly basis Cumulative shows the accumulate trends over the selected time period

## Component Tiles

Tile	Screenshot	Explanation
Surgery Activity Metrics		<p>Tile displays a summary of total and average weekly operations, split into elective and emergency cases. It dynamically updates based on the selected filters, offering a quick overview of surgical activity for the selected time period.</p>
Operations by Operation Type and Week		<p>Chart displays the total number of surgical operations performed over time, with a breakdown showing the proportion that were emergency operations.</p> <ul style="list-style-type: none"> <li>Total operations</li> <li>Elective operations</li> <li>Emergency operations</li> </ul> <p>The chart provides a clear weekly view of the surgical workload and can only be filtered at the facility level.</p>
Total Operations by Operation Type and Specialty		<p>Chart displays the total number of operations by specialty, showing the proportion of elective and emergency cases for each.</p> <p><b>Note:</b> Selecting a specific specialty on this chart or using the filter at the top applies the filter across the entire component, updating the data in the subsequent charts.</p>
Total Operations by Operation Type and Week (Specialty)		<p>Chart displays the total number of surgical operations performed over time for the selected specialty with a breakdown showing the proportion that were emergency operations.</p> <p>The chart provides a clear weekly view of the surgical workload and can only be filtered at the specialty level.</p>
Total Operations by Operation Type and Doctor		<p>Chart displays the total number of operations by doctor for the selected specialty, showing the proportion of elective and emergency cases for each.</p> <p><b>Note:</b> Selecting a specific doctor on this chart or using the filter at the top applies the filter across the entire component, updating the data in the subsequent charts.</p>
Total Operations by Operation Type and Week (Doctor)		<p>Chart displays the total number of surgical operations performed over time for the selected doctor with a breakdown showing the proportion that were emergency operations.</p> <p>The chart provides a clear weekly view of the surgical workload and can only be filtered at the doctor level.</p>

Title	Screenshot	Explanation
<p>Total Operations by Operation Type and Procedure</p>		<p>Chart displays the total number of operations by procedure for the selected specialty and/or doctor, showing the proportion of elective and emergency cases for each.</p> <p><b>Note:</b> Selecting a specific procedure on this chart or using the filter at the top applies the filter across the entire component, updating the data in the chart to the right.</p>
<p>Operations by Operation Type and Week</p>		<p>Chart displays the total number of surgical operations performed over time for the selected procedure with a breakdown showing the proportion that were emergency operations.</p> <p>The chart provides a clear weekly view of the surgical workload and can only be filtered at the procedure level.</p>