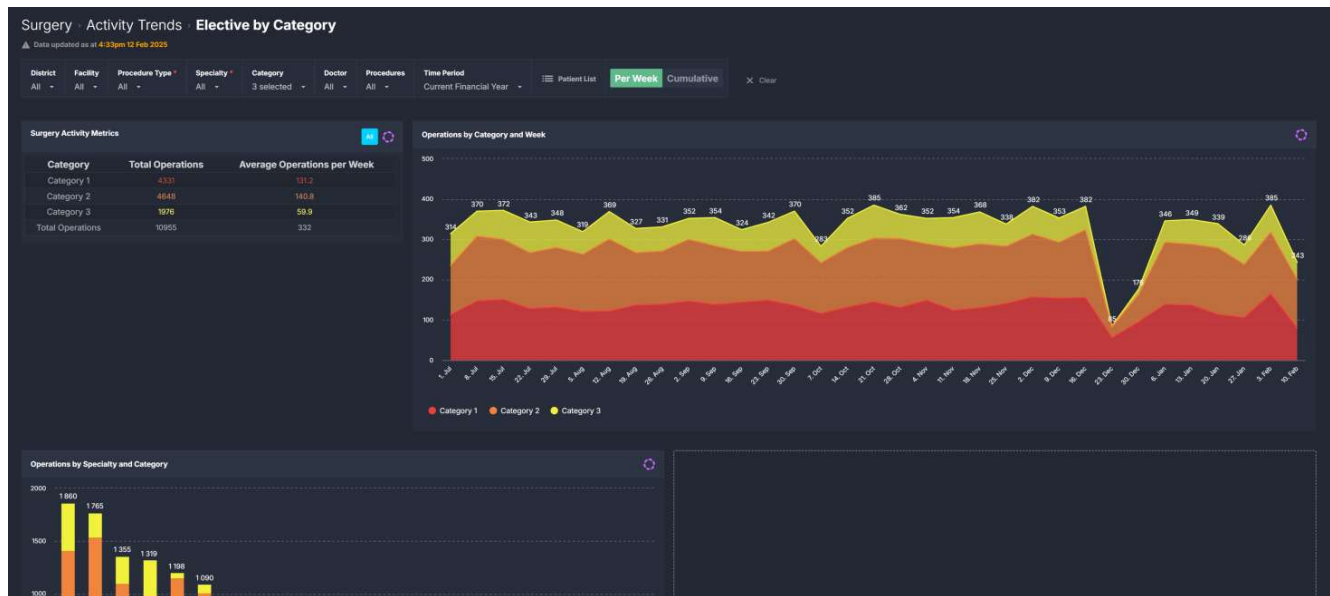


Elective by Category

Elective by Category shows weekly trends of elective surgery activity by triage category. Users can set weekly monitors to track weeks with increased activity and view financial year-to-date numbers. It provides insights into the number of surgical cases performed each week, broken down by specialty, doctor, and procedure, to allow better understanding and management of elective surgery workloads.



Filtering

The following noteworthy options are available in this component's **Filter Bar**:

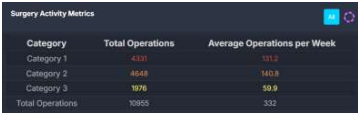

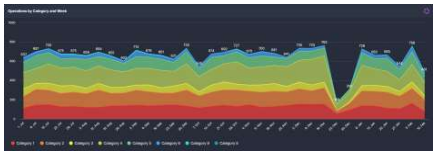
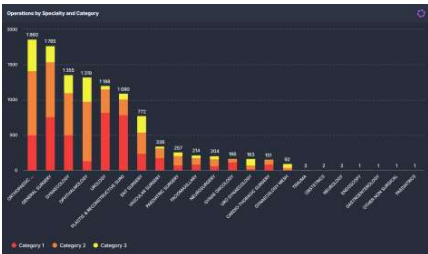
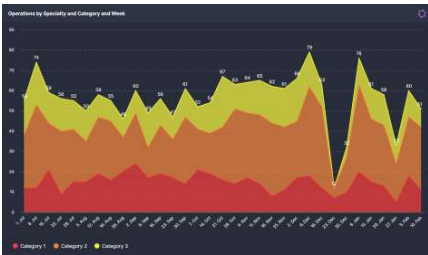
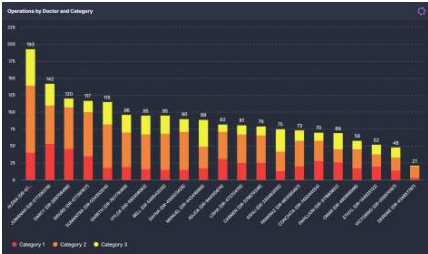
Filter	Description	Filter	Description
Procedures	Allows analysis by specific procedure code.	Time Period	Provides the ability to view activity for the last 12 months, from the current financial year, or from the start of the current year.

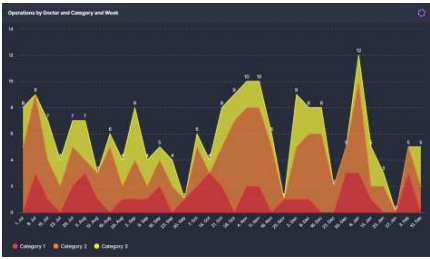
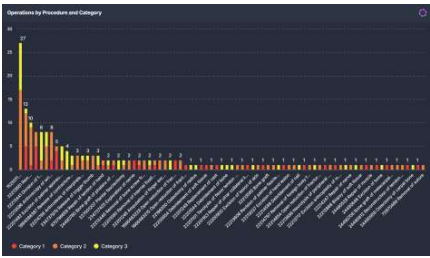
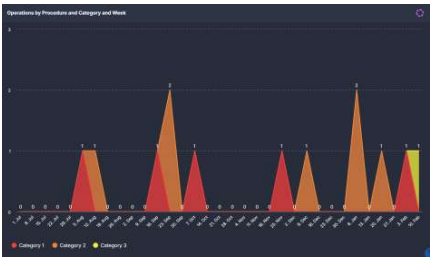
Buttons

The following buttons are available in this component.

Button	Screenshot	Action
Patient List		Clicking button displays: Patient Details List List of patients who had an elective operation based on the selected filters with key details such as Operation Date, Start & Finish Time, etc.
Per Week / Cumulative		Provides the ability to toggle between two views in the trend charts of this component: Per week displays the trend of operations on a weekly basis Cumulative shows the accumulate trends over the selected time period

Component Tiles

Tile	Screenshot	Explanation															
Surgery Activity Metrics	 <table border="1"> <thead> <tr> <th>Category</th> <th>Total Operations</th> <th>Average Operations per Week</th> </tr> </thead> <tbody> <tr> <td>Category 1</td> <td>4337</td> <td>131.2</td> </tr> <tr> <td>Category 2</td> <td>4543</td> <td>140.8</td> </tr> <tr> <td>Category 3</td> <td>1076</td> <td>59.9</td> </tr> <tr> <td>Total Operations</td> <td>10955</td> <td>332</td> </tr> </tbody> </table>	Category	Total Operations	Average Operations per Week	Category 1	4337	131.2	Category 2	4543	140.8	Category 3	1076	59.9	Total Operations	10955	332	<p>Tile displays a summary of total and average weekly operations, split broken down by Category. It dynamically updates based on the selected filters, offering a quick overview of elective surgical activity for the selected time period.</p>
Category	Total Operations	Average Operations per Week															
Category 1	4337	131.2															
Category 2	4543	140.8															
Category 3	1076	59.9															
Total Operations	10955	332															
Operations by Category and Week		<p>Chart displays trend of the total number of surgical operations performed over time, broken down by category.</p> <p>This chart provides a clear weekly view of elective surgical workloads by category and can only be filtered at the facility level.</p> <p>Note: You may see further analysis beyond Category 1, 2, & 3 displayed in this guide in your SystemView environment:</p> 															
Operations by Specialty and Category		<p>Chart displays the total number of operations by specialty, showing the proportion of category for each.</p> <p>Note: Selecting a specific specialty on this chart or using the filter at the top applies the filter across the entire component, updating the data in the subsequent charts.</p>															
Operations by Specialty and Category and Week		<p>Chart displays the total number of surgical operations performed over time for the selected specialty, broken down by category.</p> <p>This chart provides a clear weekly view of elective surgical workloads by category and can only be filtered at the specialty level</p>															
Operations by Doctor and Category		<p>Chart displays the total number of operations by doctor for the selected specialty, showing the proportion of category for each.</p> <p>Note: Selecting a specific doctor on this chart or using the filter at the top applies the filter across the entire component, updating the data in the subsequent charts.</p>															

Title	Screenshot	Explanation
Operations by Doctor and Category and Week		<p>Chart displays the total number of surgical operations performed over time for the selected doctor, broken down by category.</p> <p>This chart provides a clear weekly view of elective surgical workloads by category and can only be filtered at the doctor level</p>
Operations by Procedure and Category		<p>Chart displays the total number of operations by procedure for the selected specialty and/or doctor, showing the proportion of category for each.</p> <p>Note: Selecting a specific procedure on this chart or using the filter at the top applies the filter across the entire component, updating the data in the chart to the right.</p>
Operations by Procedure and Category and Week		<p>Chart displays the total number of surgical operations performed over time for the selected procedure, broken down by category.</p> <p>This chart provides a clear weekly view of elective surgical workloads by category and can only be filtered at the procedure level</p>